

## Smoke-Free Public Transport Station Areas

### Smoking or vaping is banned at all ACT public transport stops and public transport stations from 1 October 2017

Smoking or vaping is banned at all public transport stops in the ACT from 1 October 2017. The smoking ban has been jointly made by the Chief Minister and the Minister of Health and Wellbeing under the *Smoke-Free Public Places Act 2003*.

Smoking is banned within 5 meters of all public transport stops and at all transport stations in the ACT. This includes all platforms of passenger railways and light rail stations, bus stops and bus stations, taxi ranks and bus stop seating areas.

Smoking or vaping is banned at the following public transport stations:

- [Cohen Street Bus Station, Belconnen](#)
- [Westfield \(Belconnen\) Bus Station](#)
- [Belconnen Community Bus Station](#)
- [City Bus Station](#) (between the hours of 6:00am and 11:00pm)
- [Woden Bus Station](#)
- [Tuggeranong Bus Station](#)
- [Dickson Bus Station](#)
- [Jolimont Transit Centre, Canberra City](#)
- [Canberra Railway Station, Kingston](#)

Smoking or vaping is not permitted at any of the above public transport stations.

Smoke-free public transport station maps (over page) indicates where smoking and vaping is banned at each public transport station. Smoke-free signage will be displayed at all public transport stations to help raise awareness about the ban.

### More information

For more information about smoke-free public transport areas, please visit [www.health.act.gov.au/smokefree](http://www.health.act.gov.au/smokefree)

#### Accessibility

If you have difficulty reading a standard printed document and would like an alternative format, please phone 13 22 81.



If English is not your first language and you need the Translating and Interpreting Service (TIS), please call 13 14 50.

For further accessibility information, visit: [www.health.act.gov.au/accessibility](http://www.health.act.gov.au/accessibility)

[www.health.act.gov.au](http://www.health.act.gov.au) | Phone: 132281 | Publication No XXXXX

© Australian Capital Territory, Canberra Month Year

## Smoke-free public transport station areas.

Smoking or vaping is banned at public transport stations within the red-dotted area in the below maps.

### Cohen Street Bus Station, Belconnen



A map showing the layout of the Cohen Street Bus Station in Belconnen. The station area is highlighted in orange and enclosed by a red dotted line. The map includes labels for 'Bus Depot Driveway' on the left, 'Cohen St' at the bottom, and 'Josephson St' on the right. Blue bus icons are shown on the station platform, and green areas represent landscaping.

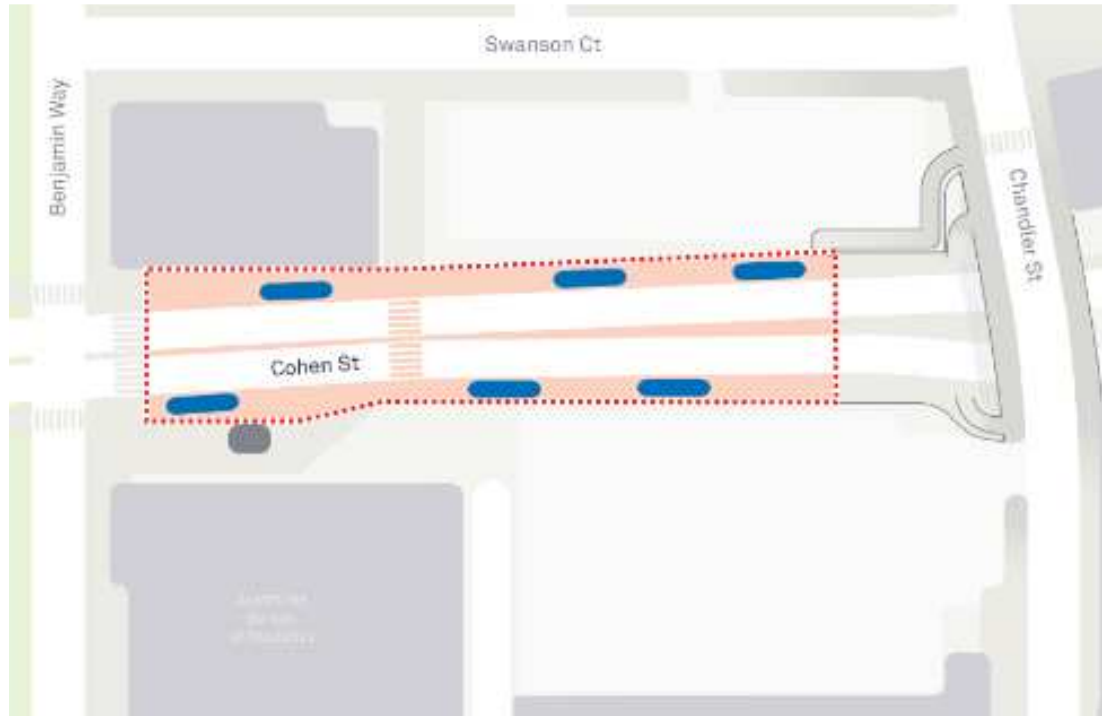
### Westfield (Belconnen) Bus Station



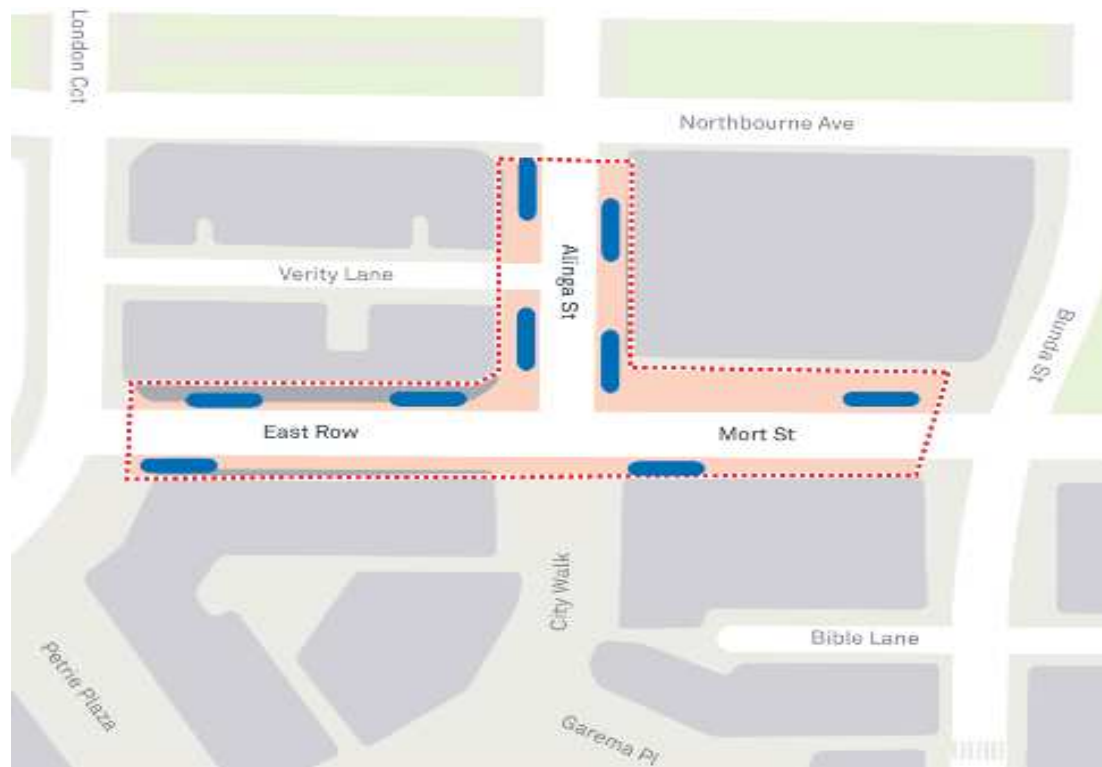
A map showing the layout of the Westfield (Belconnen) Bus Station. The station area is highlighted in orange and enclosed by a red dotted line. The map includes labels for 'Westfield Belconnen' at the top and 'Lathlain St' at the bottom. Blue bus icons are shown on the station platform, and green areas represent landscaping.

© Australian Capital Territory, Canberra | [www.health.act.gov.au](http://www.health.act.gov.au) | Enquiries: Canberra 13ACT1 or 132281

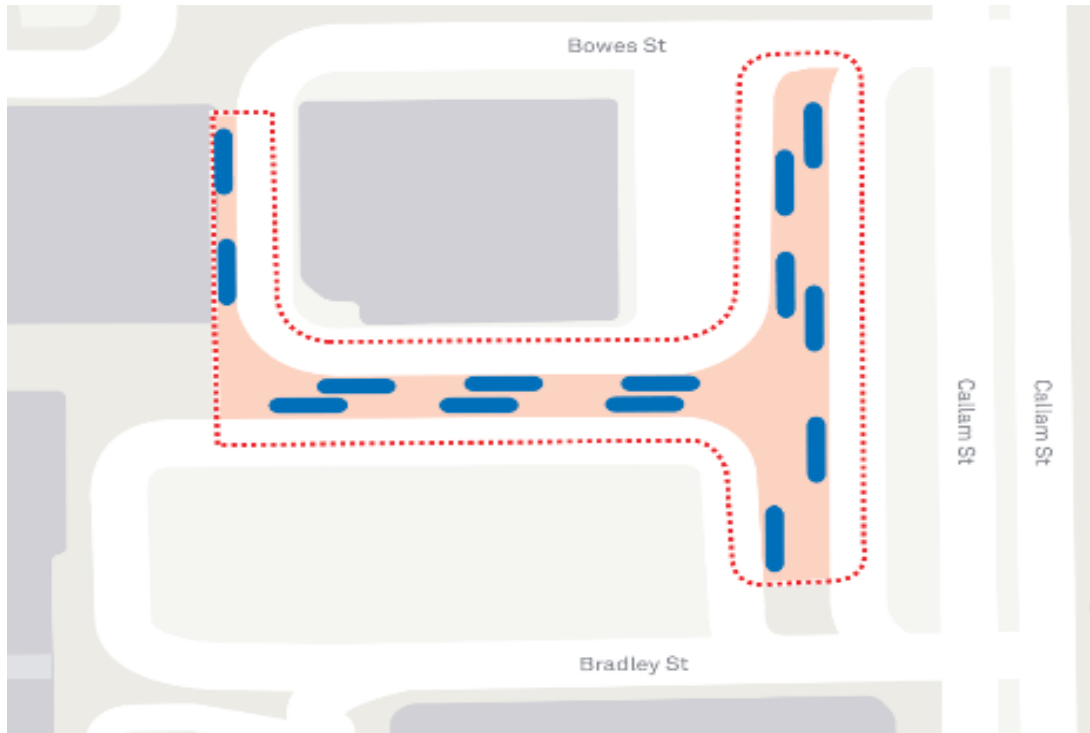
## Belconnen Community Bus Station



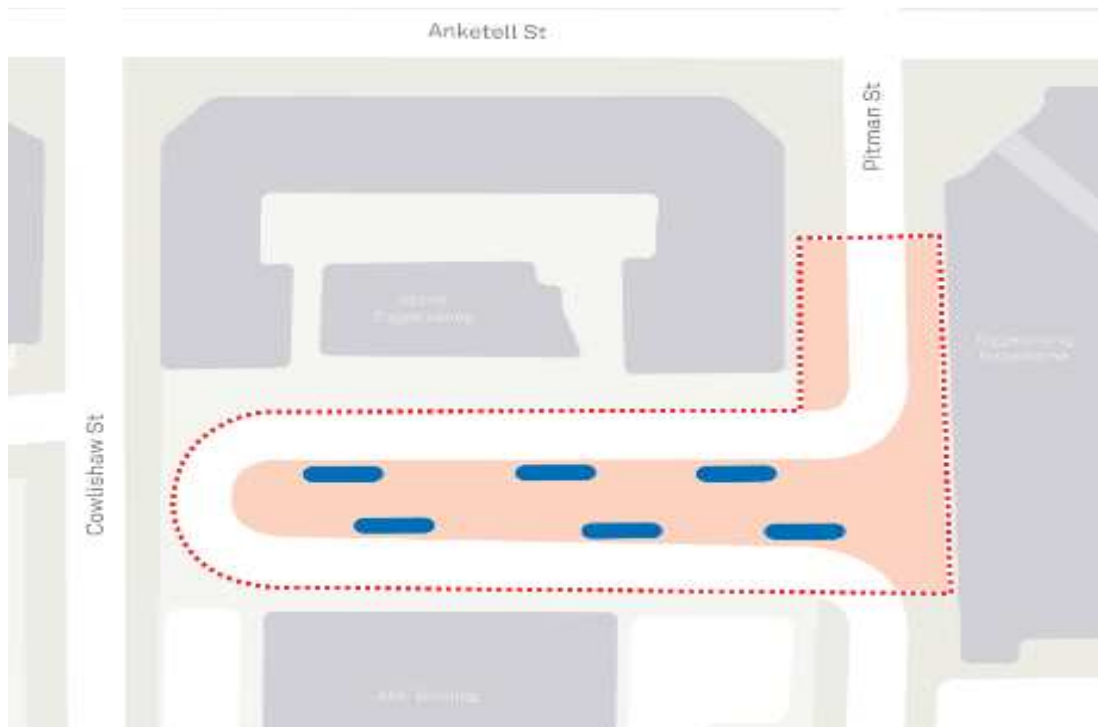
## City Bus Station



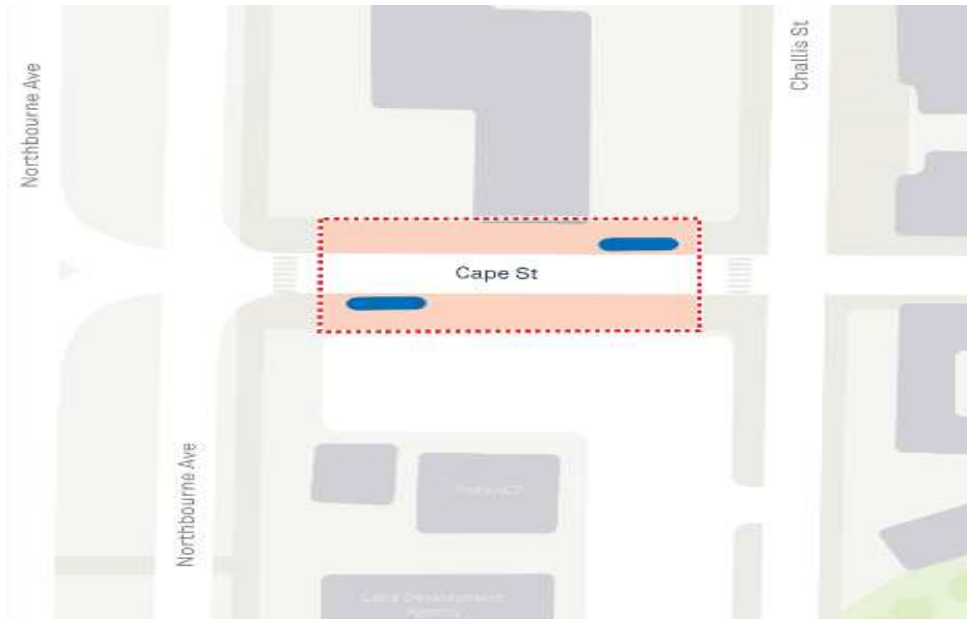
## Woden Bus Station



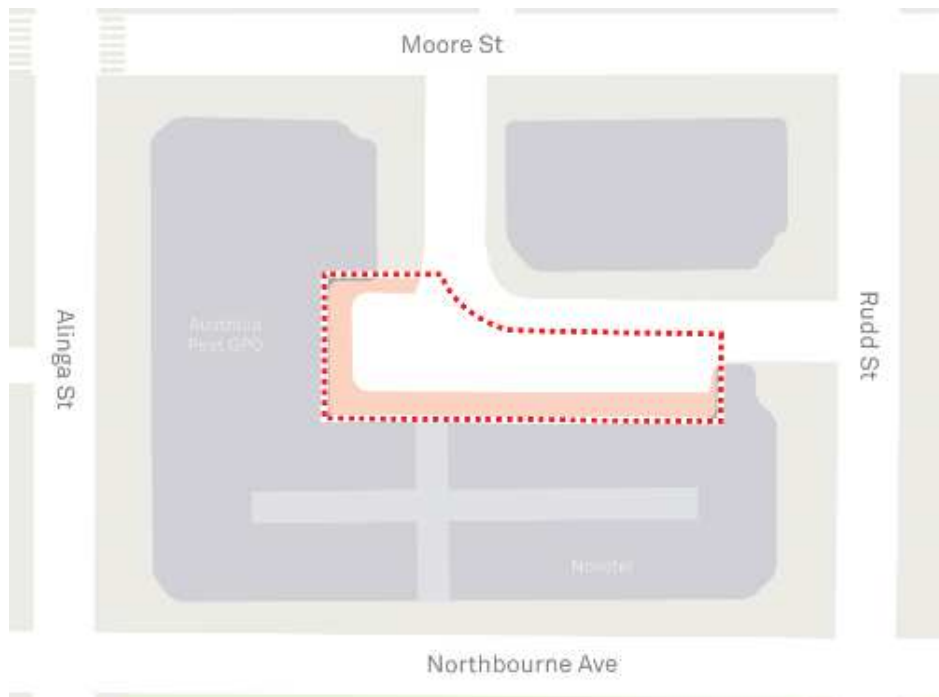
## Tuggeranong Bus Station



## Dickson Bus Station



## Jolimont Transit Centre



## Canberra Railway Station, Kingston

