

## ACT Influenza Report No. 8

**Summary:** The numbers of influenza cases reported to ACT Health indicate decreased influenza activity in the month of October, consistent with expected seasonal patterns and national trends.

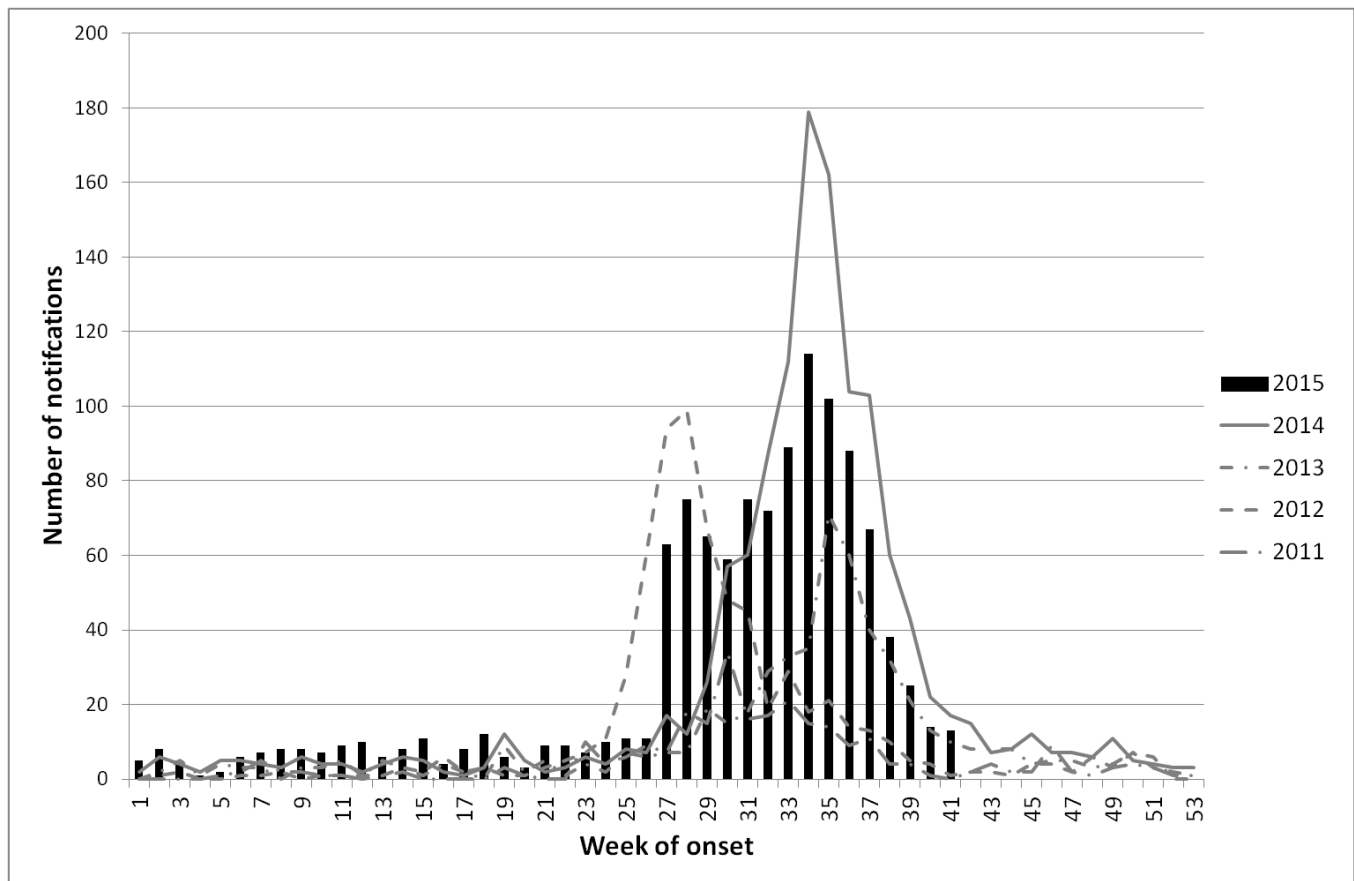
### Influenza notifications

*Reporting Period: 1 January to 10 October 2015, Weeks 1-41*

Between 1 January and 10 October 2015, there were 1,150 notifications of influenza reported in the Australian Capital Territory. This is slightly less than that received for the same period in 2014 (n=1,170). In the previous 5 years, the average number of cases reported in the same period was 508 (Table 1). Forty-two percent (n=478) of notifications were influenza A. Of the 107 influenza A notifications with subtype information available, 46 (43%) were H1N1 and 61 (57%) were H3 (presumed H3N2). The proportion of influenza B cases is greater in 2015 compared to previous years (Table 1). During the fortnight of 27 September to 10 October 2015, 27 notifications of influenza were received, 14 (52%) of which were influenza B. In the previous fortnight, 63 influenza notifications were received.

Of the 1,150 notifications received year to date, 54% (n=620) were in females. Most notifications were in 0 to 9 year olds (n=222, 19%), followed by 30 to 39 year olds (n=174, 15%) (Fig 2). The median age of cases was 31 years old. During this reporting fortnight, 37% (n=10) of notified cases were males.

**Fig 1. Number of influenza notifications in the Australian Capital Territory, by week and year of onset, 2011 – 2015#.**



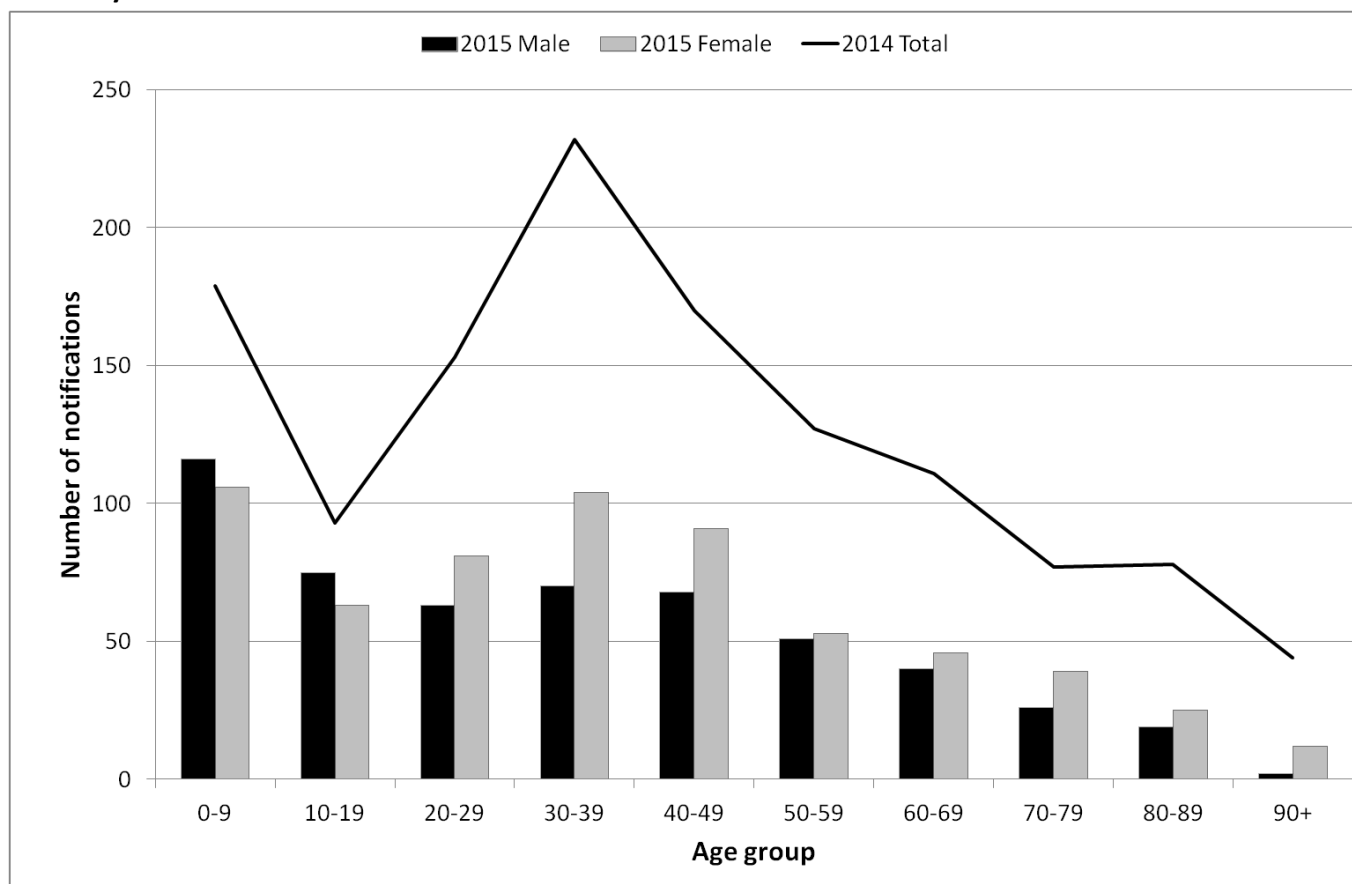
#The number of notifications reported in the previous fortnight is likely to be incomplete due to standard delays in receiving notifications.

**Table 1. Number of influenza A and B notifications<sup>^</sup> in the Australian Capital Territory, by month and year of onset, 2010 – 2015.**

		Jan	Feb	Mar	Apr	May	Jun	Jul	Aug	Sep	Oct	Nov	Dec
<b>INFLUENZA A</b>	2010	0	1	2	4	1	5	16	21	26	7	5	4
	2011	1	11	4	0	5	27	81	47	16	7	11	7
	2012	2	3	3	11	4	90	302	68	18	7	11	13
	2013	11	6	14	9	12	12	31	102	79	30	15	14
	2014	17	15	14	15	22	26	150	536	288	49	17	18
	2015	20	24	28	26	24	36	132	106	76	6	-	-
<b>INFLUENZA B</b>	2010	0	0	0	0	0	0	0	2	0	1	0	0
	2011	0	0	1	0	2	4	7	22	8	1	5	3
	2012	1	1	1	4	5	18	31	38	25	3	4	4
	2013	0	3	1	1	5	8	24	76	76	14	3	3
	2014	2	2	2	0	1	3	5	25	23	11	15	8
	2015	1	5	7	10	7	25	174	298	134	11	-	-

<sup>^</sup>Data provided for the current and most recent month may be incomplete.

**Fig 2. Age and sex of influenza notifications in the Australian Capital Territory, 1 January to 10 October 2015 and 1 January to 31 December 2014.**



All data are preliminary and subject to change as updates are received. Notification data includes all cases diagnosed in the ACT in residents of the ACT. Generally, notified cases represent only a small proportion of cases of influenza occurring in the community.

Notification data were exported on 16 October 2015 for the period 1 January 2010 to 10 October 2015, by onset date. Source: Notifiable Diseases Database, ACT, Communicable Disease Control Section, ACT Health.