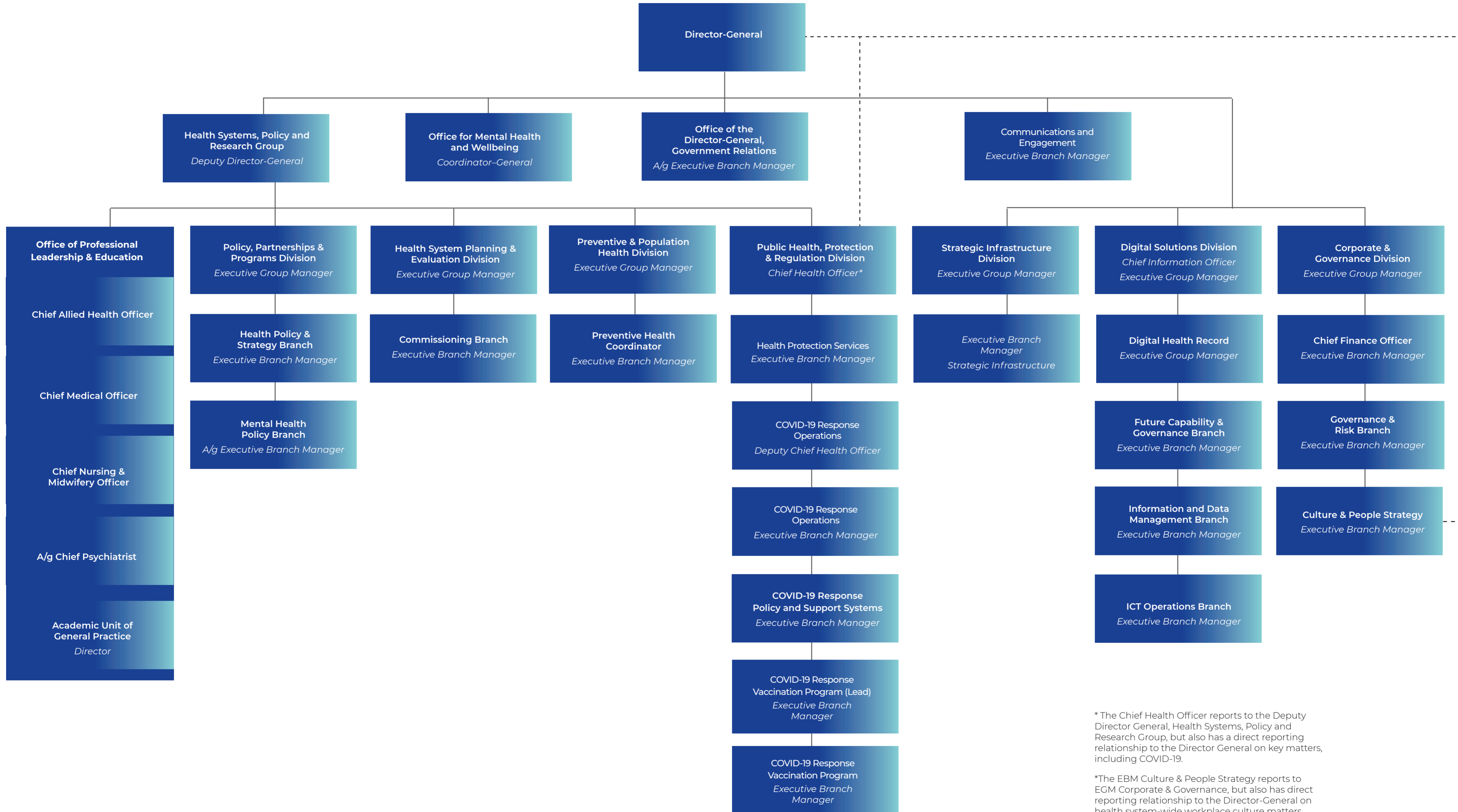


# ORGANISATIONAL CHART

As at June 2021



\* The Chief Health Officer reports to the Deputy Director General, Health Systems, Policy and Research Group, but also has a direct reporting relationship to the Director General on key matters, including COVID-19.

\*The EBM Culture & People Strategy reports to EGM Corporate & Governance, but also has direct reporting relationship to the Director-General on health system-wide workplace culture matters.